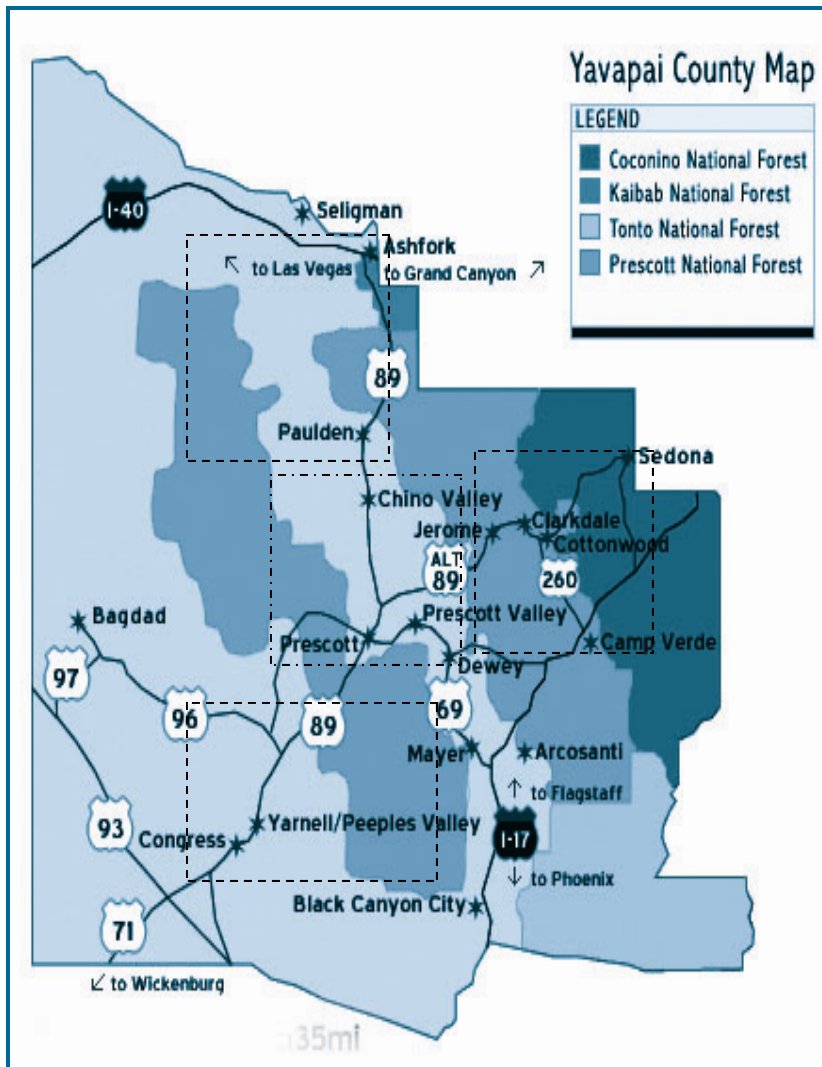


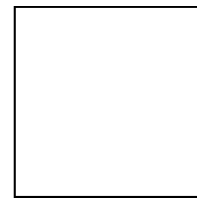
Eastern Communities

A statistical resource for community members and agencies working to keep our county healthy.



North

- Ash Fork
- Paulden
- Seligman



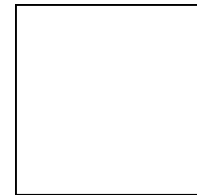
South

- Bagdad
- Black Canyon City
- Congress
- Mayer
- Yarnell



East

- Camp Verde
- Clarkdale
- Cornville
- Cottonwood
- Sedona/Oak Creek



Central

- Chino Valley
- Dewey-Humboldt
- Prescott
- Prescott Valley

People
Health

Economy
Crime

Transportation
Substance Abuse

Cost of Living
Education

Table of Contents

Eastern Yavapai County Communities

Camp Verde—Clarkdale—Cornville—Cottonwood—Sedona

Overview.....	4
People: Basic Demographics.....	5
People: Race and Family.....	6
People: Housing and Age.....	7
Health: Births and Deaths.....	8
Health: Communicable Diseases.....	9
Education: AIMS /Report Cards (Camp Verde Unified District)	10-11
Economy: Economic Indicators and Occupations.....	12
Economy: Transportation and Cost of Living.....	13
Juvenile Crime*: Rates and Community Rankings.....	14
Youth Substance Abuse*: Rates and Community Rankings.....	15
Works Cited.....	16

*Adult crime and substance abuse data not available at community level.

Produced by:



VISTA

Volunteers In Service To America

Yavapai County VISTA Project (YCVP)

www.ycvp.org

Mission: To help build and sustain the efforts of Yavapai County service providers and community members to continually improve the quality of life across the region. We work to support efforts in creating a *just* and *healthy* community.

Supported by the Corporation for National and Community Service, the project provides full-time skilled volunteers to nonprofit, faith-based and other community organizations, or public agencies to create and expand programs that ultimately bring low-income individuals and communities out of poverty. To learn more about VISTA and what they can do for your organization, contact Margaret Garvey at 928-708-0100 or mgarvey@ycvp.org.

Generations United of Yavapai County



Building Communities For All Ages

Generations United of Yavapai County (GUYC), a partnership of inspired community leaders, is advising the development of an Institute for Sustainable Social Change. Our mission is to **educate** and **empower** individuals and communities for all ages on how to work together to improve the quality of life in Yavapai County.

For more information, please contact Lori Deutsch at Youth Count (928) 708-0100.

Eastern Yavapai County: Overview

Regional Characteristics: Camp Verde, Clarkdale, Cornville, Cotton-wood, Sedona-Oak Creek

- These Verde Valley towns owe their historic roots to the early settlers who built a fort in Camp Verde in 1865. Then in 1874, Cottonwood was settled and since then, has grown to be an important retail and service center. Clarkdale played an important role in the mining business by operating the Clarkdale Smelter from 1910 to 1952. The mine, in nearby Jerome, and the smelter are both on the National Register of Historic Sites. Sedona and Oak Creek are very popular areas for tourism. The mild climate, sunshine, and beautiful red rocks make this area the second most visited site after the Grand Canyon.



Verde Valley

In This Section

■ People

Cornville's population has increased 28% since 2000. This makes Cornville the fastest growing community in eastern Yavapai County and the 4th fastest growing community of the 17 communities profiled¹.

■ Health

In 2006, 24.4% of births in Camp Verde were by teenage mothers. This is the highest percentage of all 17 profiled communities².

■ Economy

Clarkdale has the 2nd highest future job growth percentage of all 17 communities¹.

■ Education

Of the 10 high school profiled, Sedona Red Rock high School had the 3rd highest graduation rate in 2006, 91%⁴.

■ Juvenile Crime

In 2006, the rural community of Camp Verde had the third highest resident juvenile offender rate in Yavapai County, with a rate of 18.85. It ranked 4th in the number of total resident juvenile crimes per community with 402 total crimes⁶.

■ Juvenile Substance Abuse

Clarkdale had the 3rd highest narcotics crime rate in the county at 0.54, and Camp Verde ranked 4th with 0.32⁶.

- "Bring people together, set up forums and conversations, celebrate our humanity, our capacity for affection." Henry Cisneros, Secretary of HUD
- "Today's problems come from yesterday's solutions." Peter Senge, American author

Eastern Yavapai County: People

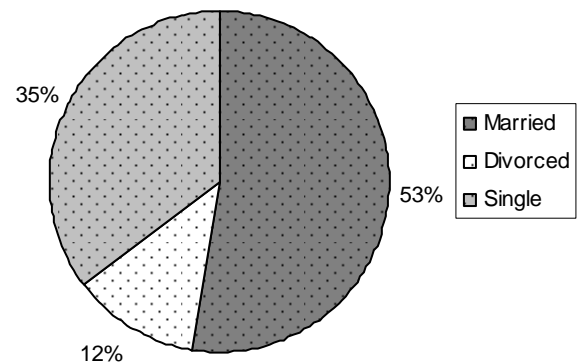
Basic Demographic Information, 2007 ¹						
	Camp Verde	Clarkdale	Cornville	Cottonwood	Sedona	Yavapai County
Population	10,610	3,836	4,255	11,171	11,323	208,004
Pop. Density	249.1	522.5	321.8	1045.3	607.4	25.6
Pop. Change*	12.26%	12.10%	27.59%	21.70%	11.10%	24.17%
Median Age	41.4	46.3	42.6	41.4	52.6	45
Male Pop.	50.73%	48.45%	50.36%	47.31%	47.06%	49.36%
Female Pop.	49.27%	51.55%	58.65%	52.69%	52.94%	50.64%

*The percent change in the population since 2000

■ Population Growth

- Cornville's population has increased 28% since 2000. This makes Cornville the fastest growing community in eastern Yavapai County and the 4th fastest growing community of the 17 communities profiled.
- All eastern communities have a population change at least double the national average of 5.88% (Sperling, 2007).
- In January of 2007, Cottonwood's population change was 4.4%. By October, it more than quadrupled to 22%. In the same time period, Clarkdale's population *decreased* by 14.5%.
- According to Harvey Grady, "Rapid population growth stresses communities and their human services and outstrips their ability to accommodate newcomers" (Grady, 2007a).

Marital Status: Eastern Averages, 2007¹



■ Marital Status

- All of the eastern communities have a higher divorce percentage compared to the U.S average of 7.64%. The highest divorced percentage among the eastern communities is 17.44% in Cornville (Sperling, 2007).

Arizona Hispanic Chamber of Commerce (AZHCC)

- **Mission:** To promote the success of Hispanic businesses by facilitating business relationships, development and knowledge.
- The AZHCC provides seminars, marketing consultations, leadership development, and networking opportunities.
- Over the last decade the number of Hispanic owned businesses has increased significantly in Arizona, and roughly one out of four residents is of Hispanic origin or descent. This phenomenal growth signifies a more diverse marketplace. The AZHCC and it's members are a vital link to future business relationships with a culturally diverse consumer, workforce and expanding global economy.

Eastern Yavapai County: People

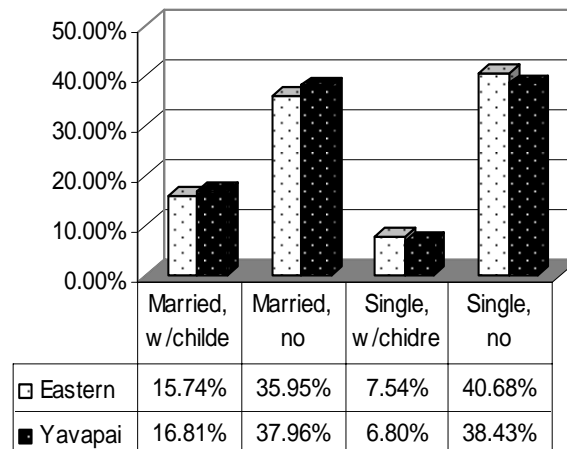
Race by Percentage, 2007 ¹						
	Camp Verde	Clarkdale	Cornville	Cottonwood	Sedona	Yavapai County
White	83.73%	85.45%	93.67%	84.35%	90.77%	91.02%
Black	0.32%	0.37%	0.30%	0.49%	0.51%	0.36%
Asian	0.37%	0.42%	0.68%	0.38%	1.22%	0.61%
American Indian	7.93%	5.71%	0.91%	1.71%	0.61%	1.71%
Other	7.75%	8.51%	5.15%	13.51%	7.28%	5.94%
Hispanic	12.72%	11.24%	10.59%	23.03%	10.11%	10.84%
Non-Hispanic*	87.08%	89.00%	89.55%	77.14%	89.52%	90.04%

*The percent of population who have indicated their ethnicity as not Hispanic. A person can be Hispanic and of any other race, which is why the total of the race categories is greater than 100% (Sperling, 2007).

Hispanic and American Indian Populations

- At 23%, Cottonwood has the 2nd largest Hispanic population of all 17 communities profiled.
- At 5.2%, Arizona's American Indian population is five times the national average.
- The eastern communities have the two largest American Indian populations. Making up 8% of the population, Camp Verde's American Indian population is the largest of all profiled communities. Clarkdale has the 2nd largest, with 6%.

Family: Eastern Averages, 2007¹



Family

- 48% of people living in the eastern communities are single. This is the largest single population of the four sections of the county.



www.youthcount.org

Youth Count

Director: Lori Deutsch

- Established to help unite organizational efforts (across and between local communities), combine their resources, and obtain additional support for their worthwhile efforts.
- Youth Count helps communities across Yavapai County create nontraditional solutions to the unique challenges facing our youth today. Its primary purpose is to **mobilize** and **energize** collective efforts to improve the lives of young people.

Eastern Yavapai County: People

Housing, 2007 ¹						
	Camp Verde	Clarkdale	Cornville	Cottonwood	Sedona	Yavapai County
Median Home Cost	\$339,900	\$324,000	\$399,900	\$269,900	\$754,900	\$387,500
Home appreciation	-10.53%	-0.72%	2.56%	-3.26%	0.67%	-1.80%
Homes Owned*	71.98%	75.14%	68.70%	50.01%	62.68%	63.49%
Housing Vacant*	9.06%	7.50%	9.25%	10.22%	13.51%	14.14%
Homes Rented*	18.50%	16.89%	21.52%	39.48%	23.71%	22.23%

■ Home Appreciation

- Like the rest of the county, eastern communities are experiencing serious home appreciation drops. During the Spring of 2007, home appreciation was 32% in Camp Verde. By the Fall, it dropped to -10.5%.
- Clarkdale and Cottonwood also have negative home appreciation values, having dropped at least 30%.

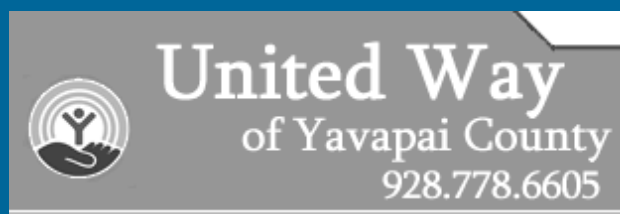
■ Sedona

- Sedona has an extremely high median home cost of \$754,900.
- Although not as drastic as in Congress and Yarnell, the 65+ population in Sedona is quite large. One in every four people are 65 years or older.

Estimated Total Population Percentages by Age, 2007 ¹						
	Camp Verde	Clarkdale	Cornville	Cottonwood	Sedona	Yavapai County
Age 0 to 17	23.22%	21.63%	22.35 %	23.56%	13.11%	20.7%
Age 18 to 24	9.41%	7.85%	9.56 %	7.90%	5.59%	8.37%
Age 25 to 44	21.60%	19.49%	21.72 %	23.97%	18.00%	21.17%
Age 45 to 64	25.16%	25.52%	32.17 %	20.91%	36.99%	27.63%
Age 65 +	20.62%	25.51%	14.20 %	23.65%	26.30%	22.14%

Community Impact through Community Conversation:

- The United Way is working together with Yavapai County Community Foundation, the Department of Economic Security, businesses, service agencies and other resources in the county to come together and discuss needs within communities and empower Yavapai County citizens. Action teams will be formed to develop plans addressing low income housing, transportation, education, employment training and opportunities.

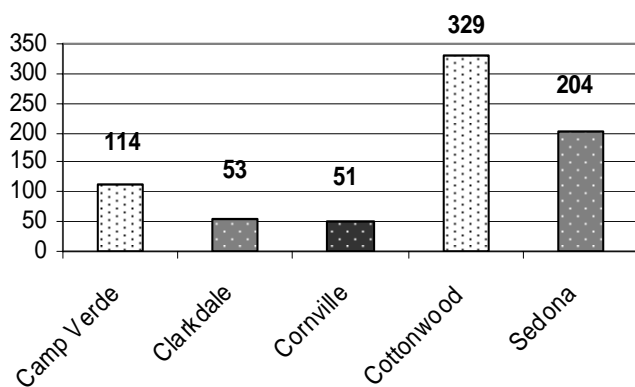


“We need to make long term and long lasting changes to improve lives and our communities.”

Eastern Yavapai County: Health

	Total	<15	15-17	18-19	20-24	25-29	30-34	35-39	40-44	45+
Yavapai County	2,380	4	96	216	771	633	393	215	49	3
Camp Verde	131	0	11	21	39	31	17	9	3	0
Clarkdale	41	0	1	2	18	4	10	4	2	0
Cornville	51	0	0	0	17	10	10	13	1	0
Cottonwood	381	1	19	39	127	110	53	24	8	0
Sedona	65	0	2	3	17	10	14	14	5	0

Total Deaths by Community, 2006²



* Consider total population of the communities

Lung Cancer

- In Cornville, lung cancer caused 10% of all deaths in 2006.

Births by Teenage Mothers

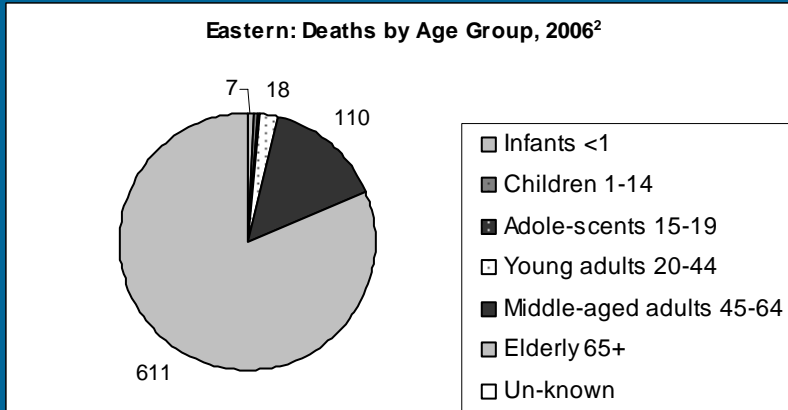
- In 2006, 24.4% of births in Camp Verde were by teenage mothers. This is the highest percentage of all 17 profiled communities
- Cornville was 1 of only 3 communities to have 0 births by teenage mothers.
- In Cottonwood, 19 births were by mothers ages 15-17. Compared to the other 17 communities profiled, this is the 2nd highest number of births in this age group. Prescott Valley had 26.

Cardiovascular Disease

- Cardiovascular disease accounted for 30% of all deaths in the eastern communities.
- Of the 5 eastern communities, only Cornville had an increase in deaths from cardiovascular disease compared to 2002, with 10 deaths in 2002 and 15 in 2006.

	All causes	Cardio-vascular diseases	Lung cancer	Motor vehicle accident	Homicide	Suicide	Drug-induced deaths	Alcohol-induced deaths	Other Causes
Yavapai County	2,386	713	143	45	8	48	24	27	1,378
Camp Verde	114	36	10	2	0	3	2	0	61
Clarkdale	53	16	5	0	0	2	0	1	29
Cornville	51	15	5	0	1	1	1	0	28
Cottonwood	329	104	20	2	1	7	1	4	190
Sedona	204	54	9	5	0	1	0	2	133

Eastern Yavapai County: Health



- Of the 751 total deaths in the region, 81% were in the 65+ age group.
- There were 7 death for infants <1, and 3 for children 1-14.
- Middle-aged deaths accounted for 15% of total deaths, with 110.
- 18 deaths, or 2% of the total, occurred in the young adult age group.

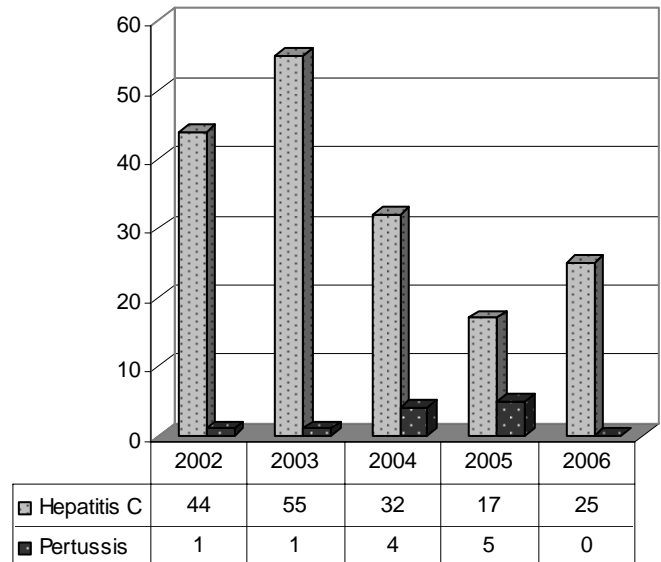
Hepatitis C and Pertussis

- In 2003, reported cases of Hepatitis C peaked at 55 cases. Since then, there has been a decrease with 25 cases reported in 2006.
- In 2005, there were five cases of pertussis (whooping cough). The next year, however, had zero reported cases.
- 19% of the county's Hepatitis C cases came from the eastern communities.

Communicable Diseases: 2002-2006

- The eastern communities had a total of 380 STD cases, accounting for 24.2% of the county total.
- From 2002-2006, 21% of all chlamydia cases and 22% of herpes cases in Yavapai County were in Cottonwood.
- 20 of the 50 cases of influenza occurred in Sedona.

Eastern: Hepatitis and Pertussis Trends, 2002-2006³



Communicable Diseases, Totals of New Reported Cases 2002-2006 ³						
	Camp Verde	Clarkdale	Cornville	Cottonwood	Sedona	Yavapai County
Chlamydia	30	5	6	124	19	594
Gonorrhea	2	1	2	9	2	40
Herpes Genitalis	0	0	1	5	1	23
Influenza	0	0	2	2	20	50
Meningitis, Aseptic	1	0	0	2	1	56
Meningitis, Bacterial	0	0	0	1	0	11
Pertussis*	2	0	0	6	3	571
Hepatitis C	23	13	16	99	22	911

*Pertussis is commonly known as whooping cough.

Eastern Yavapai County: Education

Understanding Education Data

School Report Card

- According to the Arizona Department of Education, "The purpose of the School Report Card Program is to provide comprehensive, yet concise, accurate information about each Arizona school in a standard format which is easy to understand, allows meaningful comparisons to be made among schools, and shows school accomplishments from year to year."

AIMS

- According to the Arizona Department of Education, **Arizona's Instrument to Measure Standards (AIMS)**, "is a Standards-Based test that provides educators and the public with valuable information regarding the progress of Arizona's students toward mastering Arizona's reading, writing and mathematics Standards."

School Report Card

- In 2006, Sedona Red Rock high School had the 3rd highest graduation rate in the county, 91%.
- With a 90% graduation rate, Camp Verde High School had the 4th highest rate of the 10 schools profiled.
- Mingus Union High School, in Cottonwood, came in 5th with a rate of 84%.

AIMS: Camp Verde Unified District

- The district scored lowest on the 3rd grade writing test, just 27% of 3rd graders meeting or exceeding the standard. The 5th grade writing scores were also behind the state average, trailing by 15%.
- The 8th grade test scores were the closest to the state averages, scoring 6% higher than the state on the reading test.

AIMS Results: Camp Verde Unified District vs. Arizona, 2005-2006 ^{4*}		
	District	Arizona
3rd		
Math	73%	71%
Reading	69%	67%
Writing	27%	52%
5th		
Math	66%	68%
Reading	62%	67%
Writing	42%	57%
8th		
Math	58%	59%
Reading	69%	63%
Writing	78%	78%
10th		
Math	59%	65%
Reading	68%	72%
Writing	63%	64%

*Percentage of all students who met/exceeded standard

2005-2006 Attendance, Promotion & Graduation Rates⁴

	Attendance Rate	Promotion Rate*	Graduation Rate
Camp Verde Elem.	94%	94%	NA
Camp Verde Middle School	95%	90%	NA
Camp Verde High School	96%	86%	90%
Cottonwood Middle School	95%	95%	NA
Dr. Daniel Bright Elem.	NA	92%	NA
Mingus Union High School	94%	86%	84%
Sedona Red Rock High School	92%	82%	91%
W Sedona Elem.	95%	93%	NA

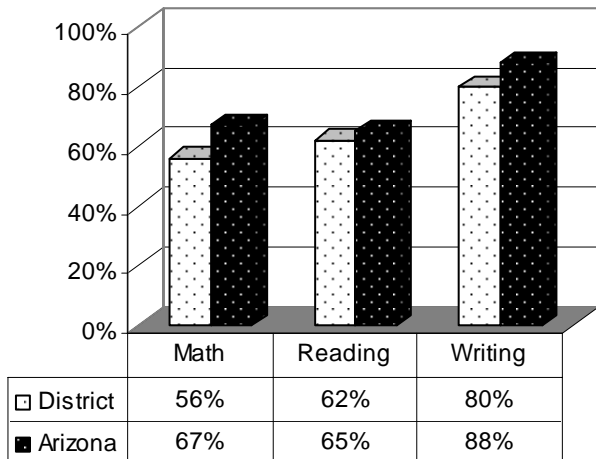
* Percentage of students promoted to the next grade, or met graduation requirements and received a traditional/non-traditional diploma.

Eastern Yavapai County: Education

Excerpts from the 2006-2007 Arizona School Report Card ⁴				
	Achievement Profile	No Child Left Behind**	Student Teacher Ratio	Enrollment (as of 10/05)
Camp Verde Elem. School	Performing	Met	14.8:1	681
Camp Verde High School	Performing Plus	Not Met	17.5:1	432
Camp Verde Middle School	Performing Plus	Not Met	19:1	383
Cottonwood Middle School	Performing Plus	Not Met*	18.4:1	736
Dr. Daniel Bright Elem.	Performing	Met	19.5	556
Mingus Union High School	Highly Performing	Met	20.4:1	1262
Sedona Red Rock High School	Highly Performing	Met	17.9:1	536
W Sedona Elem.	Highly Performing	Met	16.5:1	561

*The percentage of students in the school that passed the AIMS test did not meet or exceed the goal (Annual Measurable Objectives) for that year.

7th Grade AIMS: Camp Verde Unified District vs. AZ, 2005-2006⁴



Emergency/Provisional Certification

- In 2005-2006, 21% of public elementary and secondary school teachers in the Camp Verde Unified District had emergency/provisional certification.
- In the Ash Fork Joint Unified District, 12% of teachers had emergency/provisional certification. Mayer Unified had 5% certification, and Prescott Unified had 1% (A.D.E., 2007a).

8th Grade AIMS Comparison

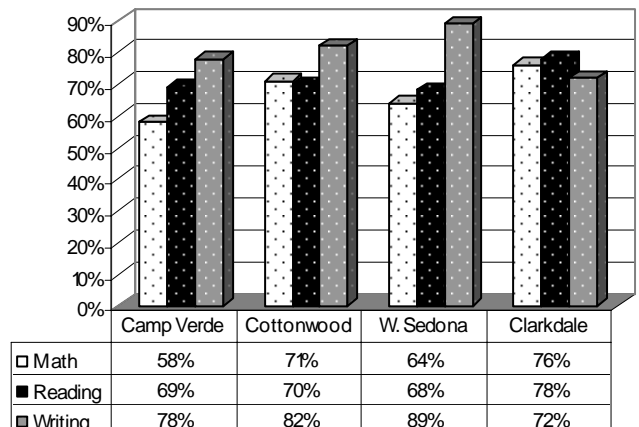
- All 8th grade scores were the same or higher than the state averages except Clarkdale, which was 6% lower in writing, and Camp Verde, which was just 1% lower in math.

Camp Verde Unified District

- The district met the Adequate Yearly Progress requirements from 2003-2005, but did not meet them in 2005-2006 because Camp Verde Middle School and High School did not have 95% of its students tested (A.D.E., 2007a).
- Total enrollment for the district in 2005-2006 was 1,525 (A.D.E., 2007a).

For more information, visit the Arizona Department of Education's website:
www.ade.az.gov

8th Grade AIMS: Eastern Comparison, 2005-2006⁴



Eastern Yavapai County: Economy

Eastern Economic Indicators, 2007 ¹						
	Camp Verde	Clarkdale	Cornville	Cottonwood	Sedona	Yavapai County
Unemployment Rate	4.00%	3.80%	4.00%	4.00%	4.10%	3.10%
Recent Job Growth - last 12 mo.	2.01%	2.04%	2.08%	2.08%	2.04%	1.45%
Future Job Growth - next 10 years	23.40%	44.90%	31.50%	20.00%	20.50%	23.17%
Sales Taxes	8.35%	8.60%	6.35%	8.55%	9.35%	6.35%
Income per Cap. (average)	\$17,239	\$23,611	\$9,598	\$ 20,244	\$36,926	\$23,121
Household Income (median)	\$36,498	\$42,174	\$42,551	\$32,098	\$50,316	\$39,713

Economic Indicators

- Of the 17 communities profiled, Sedona and Cottonwood have 2 of the 3 lowest future job growth percentages.
- Camp Verde and Cottonwood are the only two eastern communities with median household incomes lower than the county average.
- Future job growth in Clarkdale is almost double the county average.

Household Incomes (see page 13)

- 22% of households in Sedona have an income greater than \$100,000. This is by far the greatest percentage of the 17 communities. 13% of Prescott households fall in this category, which is the 2nd largest percentage.
- Just 27 miles from Sedona, Camp Verde's household incomes tell a different story. 32% of Camp Verde households have an income of \$25,000 or less, and just 5% reach over \$100,000.

Economic Activities

- According to the Arizona Department of Commerce, 2007, "Cottonwood serves as the trading center for the Verde Valley, with a wide variety of retail establishments, professional services and manufacturing concerns. Verde Valley Medical Center is one of the finest diagnostic and treatment centers in Northern Arizona. Travel and tourism Industries are also important to Cottonwood's economy."

Total Employees and Annual Payroll

- According to the 2005 U.S. Census NAICS Zip Code Business Patterns data, Sedona had 15.1% of total employees and 14.1% of annual payroll in Yavapai County. This is followed by Cottonwood with 13.5% of employees and 13.2% of payroll; Camp Verde with 4.5% of total employees and 4.0% of payroll; Clarkdale with 1.6% of employees and 2.4% of payroll and Cornville with .8% of employees and .7% of payroll.

Population by Occupation, 2007 ¹						
	Camp Verde	Clarkdale	Cornville	Cottonwood	Sedona	Yavapai County
Management, Business, Financial Operations	8.71%	12.05%	9.35%	7.24%	12.90%	11.23%
Professional and Related Occupations	12.61%	16.16%	12.24%	14.41%	20.38%	17.22%
Service	21.22%	20.54%	20.95%	25.52%	19.57%	19.01%
Sales and Office	28.53%	28.54%	31.21%	26.39%	31.40%	26.93%
Construction, Extraction, Maintenance	15.23%	15.27%	14.80%	13.51%	9.06%	13.17%
Production, Transportation, Material Moving	12.13%	7.44%	10.64%	12.61%	6.53%	11.64%

Eastern Yavapai County: Economy

	Camp Verde	Clarkdale	Cornville	Cottonwood	Sedona	Yavapai County
Avg. Commute Time	30 minutes	21 minutes	26 minutes	20 minutes	15 minutes	24 minutes
<15 minutes	36%	54%	11%	56%	70%	40%
30-44 minutes	17%	17%	29%	18%	7%	15%
>60 minutes	13%	5%	3%	5%	2%	7%
Auto (alone)	77%	80%	77%	72%	69%	75%
Car Pool	14%	14%	18%	18%	9%	14%
Mass Transit	0%	0%	0%	1%	0%	0%
Work at Home	4%	3%	3%	3%	14%	6%

■ Cost of Living: What does it Mean?

- The following categories are defined by Sperling, 2007, of www.BestPlaces.net. The cost of living indices are based on a **US average of 100**. An amount below 100 means the community is less expensive than the US average.
- The **Overall** category is the total of all the cost of living categories weighted as follows: housing (30%), food/groceries (15%), transportation (10%), utilities (6%), health care (7%), and miscellaneous such as clothing, services, and entertainment (32%). State and local taxes are not included in any category.
- Health** costs are calculated using the standard daily rate for a hospital room, the cost of a doctor's office visit, and a dental check-up.
- Housing** costs include mortgage payments, apartment rents, and property tax.

	Overall	Health	Housing
Camp Verde	104	120	105
Clarkdale	102	119	100
Cornville	111	118	124
Cottonwood	96	119	83
Sedona	150	118	233
Yavapai County	110	120	120

■ Cost of Living

- Sedona has the highest overall cost of living as well as the highest housing costs. Housing costs are nearly double the county average.
- Cornville has the 2nd highest housing costs, and the 3rd highest overall cost of living.

	Camp Verde	Clarkdale	Cornville	Cottonwood	Sedona	Yavapai County
< 15K	15.09%	12.61%	13.55%	21.81%	10.57%	14.20%
\$15K-\$25K	17.13%	12.98%	14.76%	17.09%	12.43%	14.94%
\$25K-\$35K	15.79%	16.11%	12.28%	15.64%	12.50%	14.65%
\$35K-\$50K	20.02%	17.35%	18.70%	14.79%	14.27%	18.61%
\$50K-\$75K	17.00%	21.61%	21.50%	16.33%	17.66%	17.90%
\$75K-\$100K	9.60%	8.30%	10.37%	7.42%	10.25%	8.79%
>\$100K	5.39%	11.05%	8.85%	6.92%	22.31%	10.89%

Eastern Yavapai County: Juvenile Crime/Substance Abuse

Total Resident Juvenile Crime* Rates Per Community, 2006⁶

	Rate*	County Rank	7-Year Trend	Last Year
Camp Verde	32.39	3	Down	Up
Clarkdale	19.12	11	Down	Up
Cornville	13.40	14	Even	Down
Cottonwood	19.20	10	Down	Up
Sedona	22.27	6	Down	Up

**These resident juvenile crime tables present counts of alleged crimes of juveniles residing in a community. Crimes *may* or *may not* occur in the juvenile's own community" (Grady, 2007b).

*Crime rate per 100 youth of arrestable age (10-17) living in the community

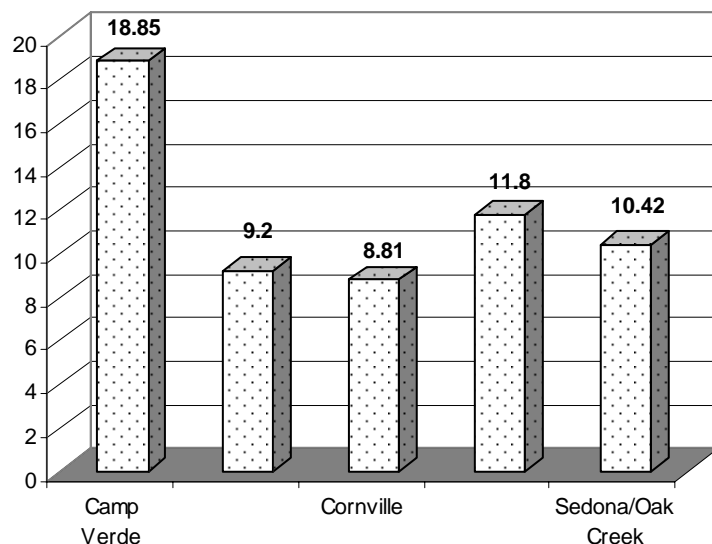
Resident Juvenile Crimes

- From 2005 to 2006, four of the five eastern communities, Cornville as the exception, had upward trends in resident juvenile crime rates.
- Cornville is one of only four communities that saw a downward trend in resident juvenile crime rates last year. The other three communities are Congress, Mayer, and Dewey-Humboldt.

Juvenile Offenders and Crimes

- Despite similar population sizes, Camp Verde had 98 more resident juvenile offenders than Cottonwood.
- In Clarkdale, there were two times as many crimes as offenders, meaning the average offender committed two crimes.

Juvenile Offender Rates, 2006⁶



Camp Verde

- In 2006, the rural community of Camp Verde had the 3rd highest resident juvenile offender rate in Yavapai County, with a rate of 18.85. It had the 4th largest number of resident juvenile crimes, with 402 crimes.

Alcohol and Tobacco

- According to countywide youth alcohol and tobacco crime rates, Camp Verde ranked high in the list of 22 communities. For alcohol abuse crime rates, it was 2nd and for tobacco possession crime rates, 5th. Sedona ranked 4th in youth alcohol crime rates and Clarkdale 3rd for tobacco crime rates.

Resident Juvenile Offenders and Crimes Per Community, 2006⁶

	Offenders	Crimes
Camp Verde	234	402
Clarkdale	36	71
Cornville	50	76
Cottonwood	332	540
Sedona	80	171

Eastern Yavapai County: Youth Substance Abuse

Youth Substance Abuse Crimes* Per Community, 2006 ⁶				
	Crimes	Percent in Yavapai County	7-year Trend	Last Year
Camp Verde	115	11 %	Up	Up
Clarkdale	19	2 %	Down	Up
Cornville	35	3 %	Up	Down
Cottonwood	128	12 %	Down	Down
Sedona/Oak Creek	66	6 %	Down	Up

*Substance abuse crimes include: alcohol, drugs, and tobacco. Drug abuse crimes include: the manufacture, sale, use, and possession of marijuana, methamphetamine, heroin, cocaine, ecstasy, prescription drugs, sedatives, stimulants, steroids, and inhalants.

Substance Abuse Crimes: Community Rankings

- Of the 22 communities profiled within Yavapai County, the eastern communities ranked as follows (Grady,2007b):

Cottonwood	3 rd
Camp Verde	4 th
Sedona/Oak Creek	5 th
Cornville	8 th
Clarkdale	12 th

Narcotics/Marijuana Crime Rates

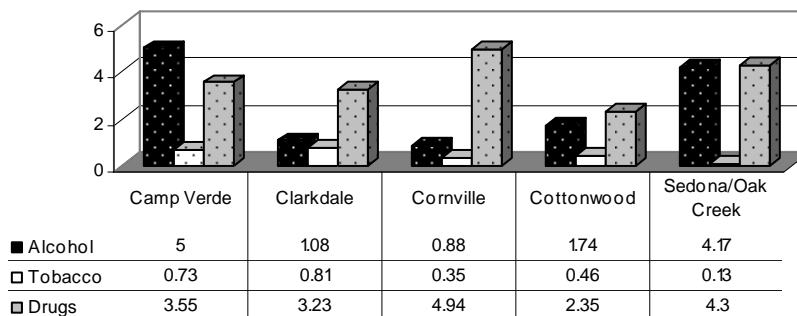
- Clarkdale had the 3rd highest narcotics crime rate in the county at 0.54, and Camp Verde ranked 4th with 0.32. Sedona/Oak Creek was 6th, 0.26, Cornville and Cottonwood rank 8th and 12th respectively.
- When looking at youth marijuana possession crime rates per community, the 5 eastern communities all ranked in the top 7 with Sedona/Oak Creek 2nd, Cornville 3rd, Clarkdale 5th, Cottonwood 6th and Camp Verde 7th (Grady, 2007b).

Youth Drug Abuse Crimes Per Community, 2006 ⁶				
	Crimes	% in Yavapai County	7-year Trend	Last Year
Camp Verde	44	9 %	Up	Down
Clarkdale	12	3 %	Down	Down
Cornville	28	6 %	Up	Down
Cottonwood	66	14 %	Up	Down
Sedona/Oak Creek	33	7 %	Down	Up

Trends

- Sedona/Oak Creek was the only eastern community to see an upward trend last year for youth drug abuse crimes.

Breakdown of Youth Substance Abuse Crime Rates, 2006⁶



Works Cited

Figures

- 1 Sperling, B. (2007). *Sperling's Best Places*. May 24, 2007, from <http://www.bestplaces.net>
- 2 ADHS Bureau of Public Health Statistics: Health Status and Vital Statistics Section. (2005). *Community Vital Statistics*, Arizona, 2005. May 22, 2007, from <http://www.azdhs.gov/plan/report/cvs/index.htm>
- 3 Everett, S. (2006). Yavapai County Community Health Services. *2002-2006 Communicable Disease Report*, 1-41.
- 4 Arizona Department of Education: Information Technology. (2007). *School Report Card Search and Review*. May 30, 2007, from http://www.ade.az.gov/srcs/find_school.asp?rdoYear=2007
- 5 U.S. Census Bureau. (2005). *North American Industry Classification System (since 1998)*. April 28, 2007, from <http://censtats.census.gov/cbpnaic/cbpnaic.shtml>
- 6 Grady, H. (2007b). *Resident Juvenile Crime*, Evaluation Report, 1-22.

Text

Sperling, B. (2007). *Sperling's Best Places*. May 24, 2007, from <http://www.bestplaces.net>

Grady, H. (2007a). County Population and Communities, *Evaluation Report*. 1-9.

Grady, H. (2007b). *Resident Juvenile Crime*, Evaluation Report, 1-22.

A.D.E., (2007). Arizona Department of Education: Information Technology. September 12, 2007, from <http://ade.az.gov/>

(A.D.E., 2007a). Arizona Department of Education: Information Technology. *School Report Card Search and Review*. May 30, 2007, from http://www.ade.az.gov/srcs/find_school.asp?rdoYear=2007

Everett, S. (2006). Yavapai County Community Health Services. *2002-2006 Communicable Disease Report*, 1-41.